



ROWE SCAN 600



High Speed Large Format Scanner

NEW

Perfection in all dimensions

**Scan and multi-functional solutions
Made in Germany**

The ROWE Scan 600 sets new standards in quality, productivity and ergonomics and its unique modularity is inspiring. Discover its superior scan quality which is without parallel on the world market



• 24 convincing examples for technical excellence and future-oriented innovation:

▶ Optical resolution 2400 x 1200 dpi

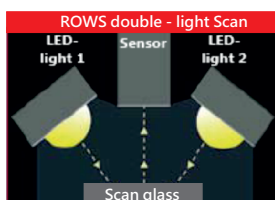
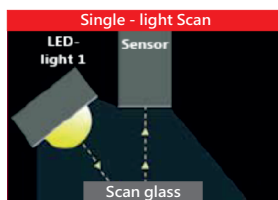
Scan width



Inch

▶ ROWE Double Light Technology

Scanning without shadows !

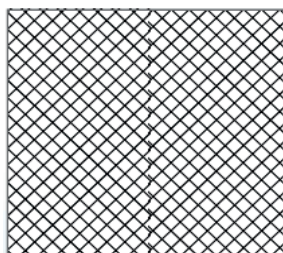


Fold line Single - light Scan

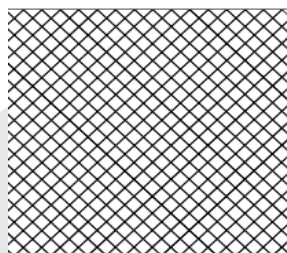
Fold line ROWE double - light Scan

Only optimally lit originals achieve a perfect scanning result : knowing this ROWE implements not one but two special light sources with LED cold light technology - to produce scanning results with an excellent quality.

▶ ROWE DYNAMIC STITCHING



Normal Scan



Scan with ROWE DYNAMIC STITCHING (RDS)

With ROWE DYNAMIC STITCHING (RDS) ROWE engineers have achieved a groundbreaking innovation : excellent scan, even when the original is folded, wavy or extremely thin. Compare the difference !

▶ Automatic detection of damage and dirt on the scan glass

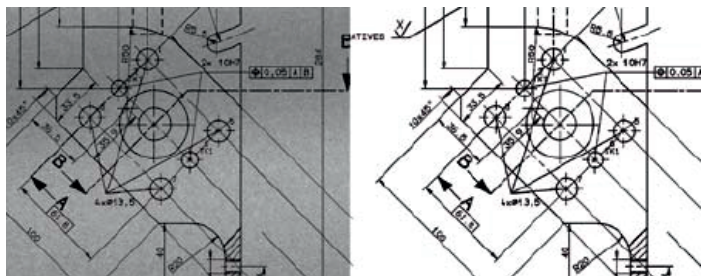
The ROWE Scan 600 automatically detects whether the scan glass is dirty or damaged and informs you immediately about the position of the damage or dirt. You can react immediately preventing any faults in the following scans.



ISO 9001 : 2008

▶ ROWE COLOR ProLogic +

Irrespective of how your original looks : ROWE COLOR PRO LOGIC + ensure that even imperfect originals are turned into perfect scans without any operator intervention. Important information such as fine pencil lines are digitally enhanced, ROWE COLOR PRO LOGIC + scan more in less time and therefore saves costs.



Original

ROWE Color PROLOGIC+

▶ ROWE BACKLIGHT

ROWE even has a solution for extreme cases : with ROWE BACKLIGHT trans-parent and foil originals which are hardly visible to the human eye can be scanned in .

▶ Automatic height adjustment up to 30mm- ROWE scans thicker !



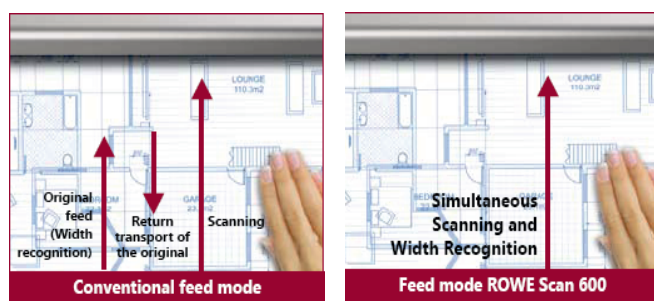
The ROWE Scan 600 scan even the thickest originals - up to 30 mm (1.18") - a user with which was often expressed. The electrically driven ROWE height adjustment works automatically at the simple push of a key: sensors determine the exact thickness of the originals, the top part of the scanner positions itself automatically at the correct height and the ROWE SAFE DRIVE guarantees the safe transport of the original.

▶ Scan width 60" - ROWE scan wider !

Do you require a scan width of 60" (1524 mm)? We have the solution ! Completely in tune with ROWE-typical modularity, all ROWE Scan 600 with 55" scan width can be upgraded at your site to 60".

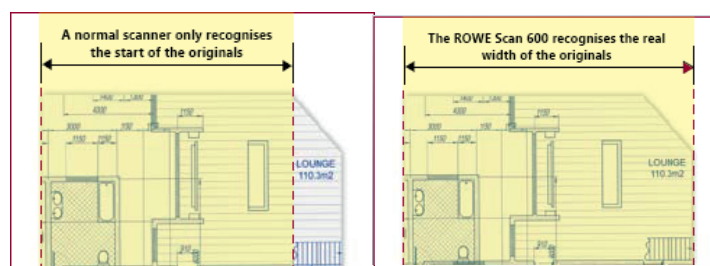


▶ Automatic Width Recognition "On the fly"



ROWE has eliminated the annoying forwards and backwards movement for recognition of the original width. On the fly, means that during the scan process the width of the original is detected precisely. This protects your documents and effectively saves time.

▶ Dynamic Width Recognition



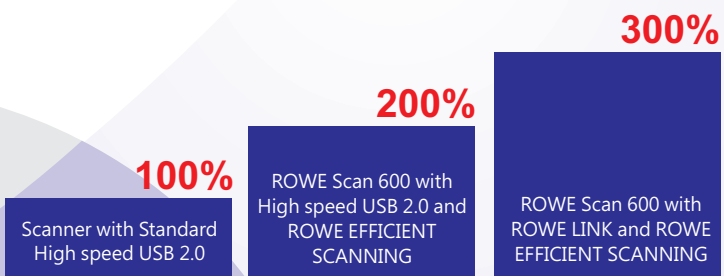
Are the corners of your original damaged or ripped ? No problem, the dynamic width re-cognition of ROWE recognises this and determines the correct width of the originals.

▶ ROWE EFFICIENT SCANNING (RES)

ROWE has optimised the High speed USB 2.0 interface: ROWE EFFICIENT SCANNING (RES) TECHNOLOGY makes it possible to compress data without loss, which in comparison with High speed USB 2.0 makes a higher data throughput of up to 200% possible.

▶ ROWE LINK with RES-TECHNOLOGY

Only ROWE LINK is more productive, a High-Performance-Interface developed by ROWE, which allows a higher data throughput of up to 300 %



Data throughput at 600 dpi in full color, format A0

▶ Document Improvement System (DIS)

After scanning you would like to change brightness, contrast or color for example, without rescanning the original ? No problem with Document Improvement System from ROWE! Any changes made will be immediately displayed in the viewer.

▶ Scanning without waiting-immediately operational

As a result of highly efficient LED-light sources a warm-up phase isn't necessary the ROWE Scan 600 is immediately operational-also in color.This saves time, energy and reduces the running costs.

▶ ROWE SAFE DRIVE

Also transports fragile originals safely and clearly reduces soiling and wear of the scan glass.

▶ ROWE automates your workflow

With 6 Hot Keys on the control panel of the ROWE Scan 600 you can automate your workflow.you group completely in accordance with your requirements - a number of functions, which can be called up by pressing a single key



And ROWE thinks even further: You are Not only individual,but all functions of the ROWE Scan Manager can be selected.

▶ Scan Glass Replacement without Tools

Removal of the scan glass is carried out without tools-simply.quickly and absolutely ergonomically it's done like this : open the top part of the scanner,press the scan glass down with your thumb and remove it-finished. Simple and ergonomical-typical ROWE.

▶ Scanning face-up

▶ MFP with HP Designjet and Canon iPF

THE ROWE SCAN600 GROWS WITH YOUR REQUIRMENTS



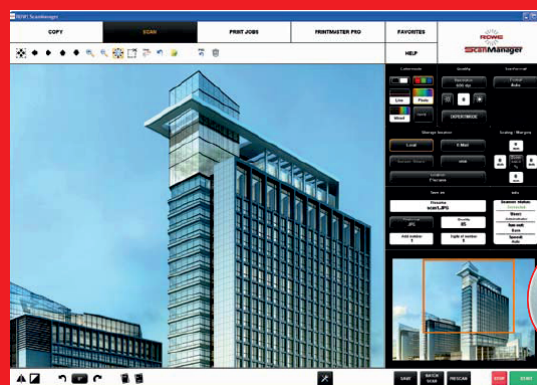
▶ Start Configuration

- ROWE Scan 600-20,44"
- Software : ROWE ScanManager LT

▶ Fully equipped

- ROWE Scan 600-20,44"
- Floor stand 44"
- Touchscre holder
- 23" touchscreen
- PC Holder
- PC,keyboard and mouse
- Software:ROWE Scan Manager Touch

▶ ROWE ScanManager - Large Format Scanning and Copying Software



With the multi-functional ROWE ScanManager you can copy, print, email,edit and scan.

The intuitive operation of all your images processing tasks will be dealt with in a way that is unique in productivity. The perfect connection between scanner.digital storage,available applications and your printers.

Superior in ease of use: With the user interface "Touch" and Desktop" ROWE deals very individually with the requirements of each user

Completely in agreement with ROWE-typical modularity the ROWE ScanManger is available in 4 versions.

▶ ROWE Scan Manager LT (Standard equipment)

SCAN+EDIT

Scope of supply includes scan-to-net,scan-to-USB, scan-to-email,basic kit image processing,2 viewers (overview and main viewer),ICC color management and much more.

▶ ROWE Scan Manager SE

SCAN+COPY+EDIT

Scope of supply includes ROWE ScanManager LT and in addition : Scan-to-copy, multiprint,multitasking. recopy,close-loop color calibration,a printer driver for both inkjet printer and ROWE printer and much more.

▶ ROWE Scan Manager PRO

SCAN+COPY+EDIT (Extended) + ACCOUNTING + PRINTMASTER PRO

Scope of supply includes ROWE ScanManager LT ,SE and in addition : Extended image pro-cessing, comprehensive cost management,PRINTMASTER PRO and much more

▶ ROWE Scan Manager TOUCH

SCAN+COPY+EDIT

Scope of supply includes ROWE ScanManager LT ,with main viewer,operator surface optimal for touchscreen-operation and in addition : Scan-to-copy,multiprint, multitasking,recopy,closed-loop color calibration,a printer driver for both inkjet printer and ROWE printer and much more.

Further Highlights

Multitasking

Non - stop processing of copy and scan jobs also during the printing of copies and print jobs.

Recopy

Repeated output of the last scanned original with other setting (scale down, enlarge, fold etc.) , without rescanning.

Scan-to-net,-email,- copy

The scanned original can be directly stored as a file for example in the company archive, respectively stored on a USB-stick or printed

Multiprint

the scanned original can be output to several printers at the same time.

View

Makes direct viewing and editing of your scanned documents possible - at lightning speed and without limitation of the size

Technical Data Accessories ROWE Scan 600 Series*

Features	Description	ROWE Scan 600-20	ROWE Scan 600-40	ROWE Scan 600-60
Maximum scan width	44"(1118 mm) / maximum original width 47.4" (1204 mm)	✓	✓	✓
	55"(1397 mm) / maximum original width 63.2" (1606 mm)	0	0	0
	60"(1524 mm) / maximum original width 63.2" (1606 mm)	0 / + On site upgrade from 55" to 60" possible	0 / + On site upgrade from 55" to 60" possible	0 / + On site upgrade from 55" to 60" possible
Maximum original thickness	Up to 1.5 mm (0.06")	✓	✓	✓
	Up to 30 mm (1.18"). The electrically driven ROWE height adjustment works fully automatically at the simple push of a key.	0	0	0
Scan length	Not limited by the scanner	✓	✓	✓
Optical resolution	2400 x 1200 dpi	✓	✓	✓
Maximum resolution	9600 dpi	✓	✓	✓
Scan accuracy	0.1% +/- 1 Pixel	✓	✓	✓
Color depth	48-bit color	0/+	✓	✓
	16-bit greyscale	✓	✓	✓
Color space	sRGB	0/+	✓	✓
ROWE BACKLIGHT	With ROWE BACKLIGHT even transparent and foil originals can be scanned, which can be hardly read by the human eye.	0	0	0
Color (24-bit RGB) and 8-bit indexed color at 400 dpi (Turbo)	Meter per minute / Inch per second	-	5.5/3.6	7/4.6
Black/white (1-bit) and greyscale (8-bit) at 400 dpi (Turbo)	Meter per minute / Inch per second	18.5/12.15	18.5/12.15	18.5/12.15
No warm-up time	Immediately operational (also for color)	✓	✓	✓
High Speed USB 2.0 with RES-Technology	Enables data compression without loss and an increased data throughput of up to 200 % increased compared to High speed USB 2.0	✓	✓	✓
ROWE LINK with RES-Technology	High-Performance-Interface, enables data compression without loss and an increased data throughput of up to 300 % increased compared to High speed USB 2.0	0/+	0/+	0/+
Power connection	100 - 240 V 50/60 Hz	✓	✓	✓
Power consumption	Operating / energy saving mode with programmable timer Stays below the requirements of the Energy	43 W / <2 W	43 W / <2 W	43 W / <2 W
Weight	Scan width 44" (with automatic height adjustment plus 3 kg)	37 kg	37 kg	37 kg
	Scan width 55"/ 60" (with automatic height adjustment plus 3 kg)	46 kg	46 kg	46 kg
	Scan width 44" Depth x Width x Height (with automatic height adjustment width plus 6 mm)	439 x 1454 x 205 mm	439 x 1454 x 205 mm	439 x 1454 x 205 mm
	Scan width 55"/ 60" Depth x Width x Height (with automatic height adjustment width plus 6 mm)	439 x 1454 x 205 mm	439 x 1454 x 205 mm	439 x 1454 x 205 mm
ROWE ScanManager LT	SCAN + COPY	✓	✓	✓
ROWE ScanManager SE	SCAN + COPY + EDIT	0/+	0/+	0/+
Operating systems supported	Windows 7, Windows Vista, Windows XP SP3, 32-bit and 64-bit	✓	✓	✓

Authorized Dealer



Edifice Technologies

Address : 42, Nand Ghanshyam Ind Estate
Opp Sun Pharma, off Mahakali Caves
Road Andheri (E) Mumbai - 400 093
Sales : (Dir) + 022 6695 2201
Mob : +91 97022 10202

Toll Free No